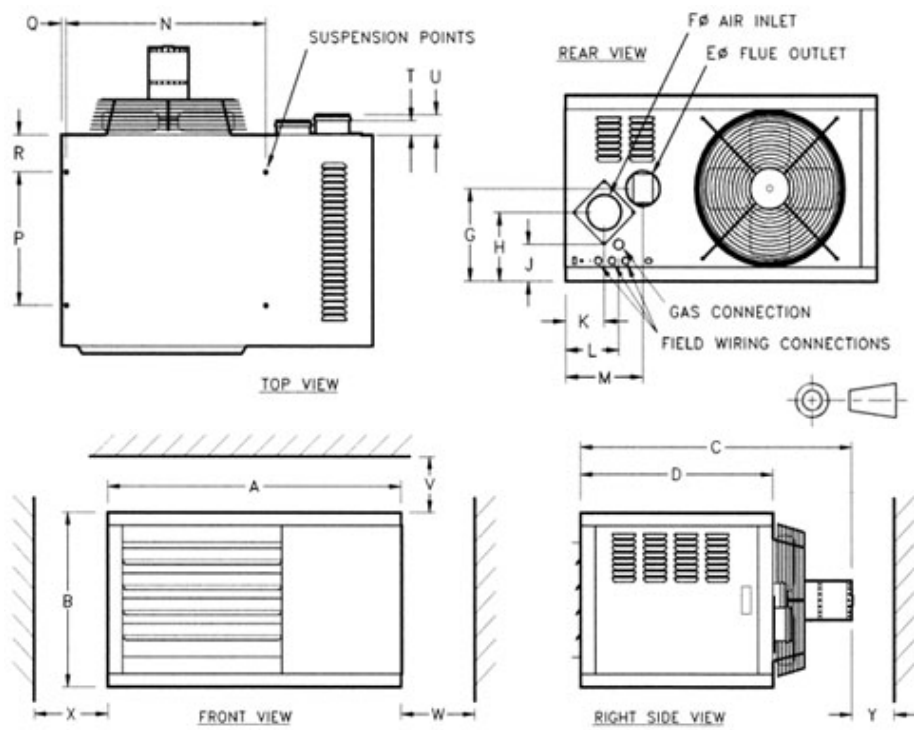


1 Not supply line size.

2 Up to 9 metres of additional pipe can be added to both flue and combustion air inlet, reduce by 1.5 metres for each 90° elbow.

3 To underside of heater.

DIMENSION DATA



DIMENSIONS (mm)

	MODEL	C4011	C4018	C4024	C4030	C4036	C4047	C4060	C4072
A	WIDTH	753	753	967	967	967	967	1300	1300
B	HEIGHT	311	450	567	567	845	845	845	845
C	OVERALL LENGTH	751	871	940	940	895	895	898	898
D	CABINET LENGTH	596	596	654	654	652	652	652	652
E	FLUE OUTLET DIAMETER	80	100	100	100	130	130	130	130
F	AIR INLET DIAMETER	80	100	100	100	130	130	130	130
G	BASE TO FLUE OUTLET	170	339	442	442	720	720	720	720
H	BASE TO AIR INLET	230	225	343	343	508	508	508	508
J	BASE TO GAS INLET	103	109	116	116	185	185	182	182
K	SIDE TO AIR INLET	85	91	128	128	139	139	140	140

L	SIDE TO GAS INLET	99	99	163	163	150	150	153	153
M	SIDE TO FLUE OUTLET	182	172	227	227	216	216	206	206
N	SUSPENSION CENTRES	456	456	616	616	616	616	745	745
P	SUSPENSION CENTRES	406	406	406	406	406	406	406	406
Q	SIDE TO SUSPENSION POINT	14	14	14	14	14	14	218	218
R	BACK TO SUSPENSION POINT	25	25	123	123	120	120	120	120
T	FLUE OUTLET SPIGOT	78	50	50	50	50	50	50	50
U	AIR INLET SPIGOT	78	50	50	50	50	50	50	50
V	TOP CLEARANCE	50	50	150	150	150	150	150	150
W	ACCESS SIDE CLEARANCE	500	500	600	600	600	600	600	600
X	SIDE CLEARANCE	50	50	150	150	150	150	150	150
Y	REAR CLEARANCE	250	250	350	350	350	350	500	500



"setting the standard for warm air heating"

www.warmco.co.uk